

Location Tracking with Wireless Local Area Networks

Standard Wi-Fi wireless networks can be used to accurately locate and track valuable assets such as equipment or people using small RFID tags or any 802.11-enabled wireless device, such as laptops, PDAs, phones or barcode scanners. By leveraging standards-based wireless networks, location visibility is achieved, improving productivity and efficiency.

Wi-Fi location tracking solves pressing business problems in many different industries. Whether you are a logistics provider looking to track inventory in your yard, a manufacturer trying to streamline production processes, or a hospital attempting to reduce the high costs of misplaced or underutilized equipment, Wi-Fi location tracking is a solution to your problem. Because this solution is based on familiar Wi-Fi networking standards, it can be added to your existing network at a low cost and with minimal effort.

Find

Determine and display real-time asset location from standard or user-defined criteria.

Track

Monitor the location and movement in real-time.

Alert

Trigger rules-based alerts upon movement to or from locations.

Log

Store historical location information for analysis and playback for safety, operations or legal purposes.

Integrate

Interface to third party applications to gain more granular visibility and coordination.

Azure Wireless

1010 West Hamlin Road
Rochester Hills, MI 48309
Tel: 248.651.8210
Fax: 248.651.8303
www.azurewsol.com

Healthcare

Solves the problems associated with unknown staff and patient location and lost, misplaced and underutilized medical equipment and enables increased patient throughput and safety.

Increased Asset Utilization

The ability to find assets instantaneously and improve their flow through hospital processes saves staff time and lowers capital or lease costs.

Asset Loss Prevention

The ability to detect movement to or from locations reduces asset loss.

Patient and Staff Location

Knowledge of their location helps optimize the patient-care process and helps manage schedules in real-time. Critical-care patients benefit from constant location tracking and staff location is also important, both in emergencies in which a physician must be summoned as well as in cases in which staff themselves need help.

Improve Efficiency of Compliance Activities

Location tracking can speed the pace of activities such as equipment calibration.

Manufacturing

Cuts capital and operating costs sharply through instantaneous knowledge of the location of equipment, high-value inventory and people.

Inventory Management

Significant cost savings by ensuring continuous movement of inventory through the manufacturing process. Real-time location data keeps stock locations updated and accurate without searches and cycle counting processes.

Container Management

Knowledge of container location can reduce the number of containers and eliminate problems created by container shortages.

Resource Allocation

Continuous real-time visibility of resources such as tools and forklifts leads to the elimination of bottlenecks, better asset utilization, accelerated inventory turn and enhanced return on capital investments.

Event Monitoring

Visibility data and location tracking enhance operations management. Exceptions and events can trigger actions such as email and text message alerts.

Logistics

Drives efficiency in logistics environments, which require rapid handling of large numbers of inventory items.

Yard Management

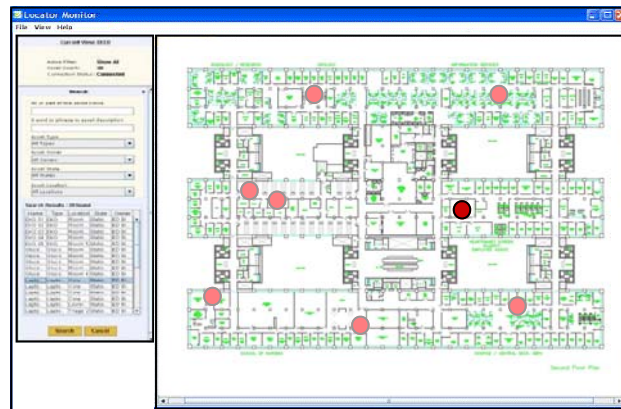
Full visibility of trailer and container locations, when used in conjunction with yard management software, can dramatically reduce the costs of manually locating a trailer that has been placed in the wrong location or incorrectly recorded.

Fleet Tracking

Wi-Fi location systems can track the movement of delivery trucks visiting multiple locations or sites without the need for expensive GPS systems.

Container Management

Knowledge of container location can reduce the number of containers and eliminate problems created by container shortages or loss.



Multiple Tracking Modes

Location tracking over WLAN can be provided in a variety of modes:

Real-time location

Gain visibility of real time location to within a few meters.

Presence detection

Detect presence or lack of presence in zones or areas where real-time location is not necessary or feasible.

RFID choke-point visibility

Detect passage through a defined area such as a gate or door, providing instant knowledge that an asset has entered or exited; trigger alarms, tag behavior modification or telemetry data retrieval.

Telemetry

Obtain telemetry data such as mileage, levels, and temperature through tag serial interfaces and send that data wirelessly in addition to the location messages.